

Dash Mega



features & benefits

An excellent tripod banner stand, the Dash Pro is manufactured of anodized aluminum. Available as a single or double sided banner stand, it is very stable and quick and easy to erect.

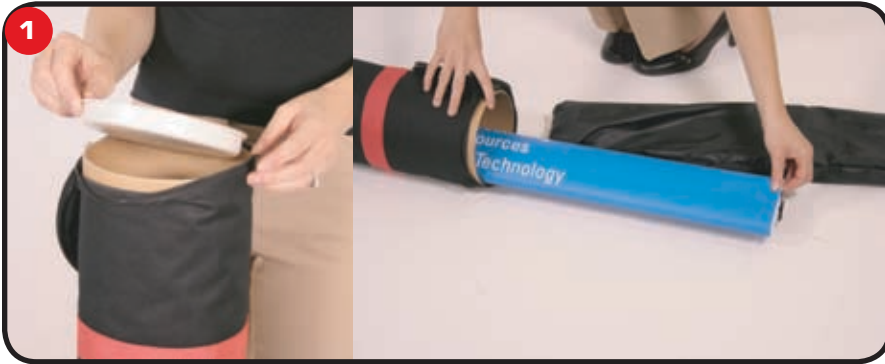
Single sided Silver: DSH-ME

Double sided Silver: DSH-ME-2

hardware specifications	graphic specifications	additional info
Height: 102.5" Width 36" Unit Footprint 28" x 27"	Max graphic height: 95" Graphic width: 36"	Weight: 3.70 lbs. Unit & bag weight 6.95 lbs. Shipping weight: 10 lbs. Shipping Dimensions: 43" x 8" x 8" Bag Dimensions: 40.5" x 6.75" dia.

We are continually improving and modifying our product range and reserve the right to vary the specifications without prior notice. All dimensions and weights quoted are approximate and we accept no responsibility for variance. E&OE.

Assembly Instructions



1 Unzip bag and remove cap, then remove graphic and unit from tube.



2 Remove unit from black bag.



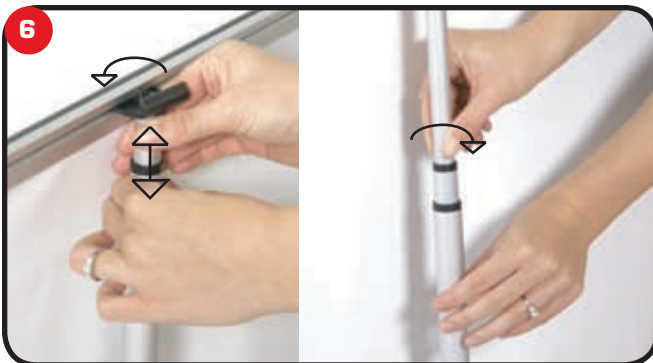
3 Remove plastic bags from legs of the unit and protective covering from the base.



4 Attach legs to the base of unit, then stand unit upright.



5 Attach top graphic rail to the top of the unit and let the graphic hang down.



6 Twist top pole to loosen and raise graphic then twist top pole to tighten in place. Then repeat with the middle pole.



7 Attach bottom graphic rail to bottom rail fitting.



8 Put tension on graphic and tighten screw on bottom rail fitting.